

**Invitation for Bids (“IFB”) For
Flooring Products and Installation
(Salt Lake City Campus)**

This RFP is Being Issued by:

Wallace Stegner Academy
980 S. Bending River Rd.
Salt Lake City, Utah 84104
Tel. 801.456.9570

Date of IFB Issue: March 27, 2026

Deadline to Submit Proposals: April 13, 2026 at 5:00 p.m.

I – KEY DATES

- A. **Date of IFB Issue:** March 27, 2026.
- B. **Deadline to Submit Bids:** April 13, 2026 by 5:00 p.m.
- C. **Opening of Bids:** April 13, 2026 at 5:00 p.m. at the offices of Academica West located at 290 N. Flint St., Kaysville, UT 84037. **Bidders are NOT expected or required to attend the opening.**
- D. **Anticipated Contract Award Date:** April/May 2026.
- E. **Project Schedule:** The following commencement and completion date ranges apply unless another date range is agreed upon by the School:
 - 1. Work may commence after May 29, 2026.
 - 2. All work must be completed by June 30, 2026.

II – GENERAL INFORMATION

- A. **Background.** Wallace Stegner Academy (“WSA” or the “School”) is a Utah nonprofit 501(c)(3) corporation and public charter school with campuses located in Salt Lake City, West Valley City, Kearns, and Sunset, Utah. WSA began operations in 2008 and enrolls over 2,000 students in grades K-12.

The services that are the subject of this RFP is for the Salt Lake City campus located at 980 S. Bending River Rd., Salt Lake City, Utah 84104.

- B. **Campus Building.** WSA’s Salt Lake City building is a two-story building with approximately 54,108 square feet. **Attached to this RFP as Exhibit A are the floor plans of the building showing dimensions and the various types of flooring throughout the building.**
- C. **Purpose of IFB.** The purpose of this IFB is to solicit bids to replace all carpeting throughout the building as indicated on Exhibit A. Bids should include all the work necessary to accomplish this, including but not limited to:
 - Moving and replacing furniture and equipment in the School necessary to complete this project
 - Include removing and dispose of existing carpeting and cove/rubber wall base in carpeted areas
 - Install new carpeting and rubber wall base
 - Specifications for new carpeting:
 - Grade of new carpet should be equivalent to Shaw Correspond carpet tile and Shaw Gradient broadloom carpet for stairs
 - Any additional work necessary to complete this project
 - Cleaning up work site and removing all trash/debris.
- D. **Reduction in Scope of Project.** WSA reserves the right to reduce the scope of this project if the School, in its discretion, determines that it would be financially prudent for them to do so.
- E. **Award of Contract.** The contract will be awarded to the responsible bidder who meets all objective criteria set forth in this IFB and submits the lowest bid. To the extent permitted by law, WSA may reject any and all bids and may waive any informality or technicality in any bid received if WSA’s Board determines it would serve the best interests of the School.

- F. **Contract Documents.** The successful bidder selected by WSA's Board pursuant to this IFB will be required to enter into a written guaranteed maximum price contract consistent with the acceptable services, terms, and conditions outlined in the successful bid and the requirements set forth in this IFB.

III – GENERAL BID INFORMATION

- A. **Bids must be submitted by email in compliance with Section V of this IFB. Bids received by regular mail, hand delivery, telephone, fax, or any other unapproved form are not acceptable and may not be considered.**
- B. **The content of a bid must address the requirements stated in Section V of this IFB.**
- C. **Bids will be opened publicly at Academica West as stated above.** Bids will be opened so as to avoid disclosure of contents to competing bidders during the process of negotiation. Only the names of bidders who submitted bids will be identified at the opening of bids. **Bidders are not required or expected to attend.**
- D. The School may, for the purpose of assuring full understanding of and responsiveness to the IFB's requirements, enter into discussions or conduct interviews with, or attend presentations by, bidders who submit bids.
- E. Bidders acknowledge that the School's issuance of this IFB does not obligate the School to accept any of the bids submitted in response to this IFB, nor does it guarantee that the School will in fact accept any of the said bids. To the extent permitted by law, the School and its Board reserves the right to accept or reject any or all bids and/or to waive any or all formalities in any bid or in the bid process deemed to be in the best interest of the School. No agreement exists on the part of the School and any bidder until a written contract is approved and executed by the School.
- F. This IFB does not obligate the School to pay for any costs of any kind whatsoever that may be incurred by a bidder or any third parties in connection with a bid. All submitted bids, responses, and supporting documentation shall become property of the School. Further, the School shall not be liable to any bidder, person, or entity for any losses, expenses, costs, claims or damages of any kind arising out of, by reason of, or attributable to, the bidder responding to the IFB.

IV – SERVICE REQUIREMENTS

A. **Expectations for WSA**

1. WSA owns the building in which the work will take place and will permit the winning bidder to have adequate access to its land and buildings, as necessary, to complete this project. In addition, WSA officials or representatives will be reasonably available to consult with and advise the winning bidder throughout this project.
2. WSA will fund this project.

B. **Expectations for Bidders**

1. Bidders must hold current licensure to engage in the work described in this IFB.

2. Bidders that utilize subcontractors must ensure the subcontractors have current licensure to engage in the work described in this IFB. Subcontractors must sign an approved lien release form and have adequate insurance before bidders disburse payments to them.
3. Bidders must have adequate financing to fund their business and work obligations during the term of the contract.
4. Bidders must have sufficient general liability and workers comp insurance as well as auto insurance on all vehicles used in their business.
5. Bidders must have previously completed projects similar to the one described in this IFB for Utah charter or district schools.
6. Bidders must comply with and follow instructions in this IFB.
7. The winning bidder must enter into a written contract with the School within a reasonable deadline required by the School.
8. The winning bidder must meet all applicable legal requirements of charter school or school construction in the Utah and comply with all applicable building codes, statutes, and rules governing charter school or school construction.

C. Expectations Regarding Bid Pricing

1. Bidders must include a total anticipated guaranteed maximum price to be charged by the bidder to complete this project.

V – BID REQUIREMENTS

A. **Delivery of Bids.** Bids must be emailed to Gabe Clark at gabe@academicawest.com by the deadline provided above.

B. **Content of Bids.** Bidders must include the following in their bids:

1. ***Experience, Qualifications, and Track Record.*** Provide information demonstrating that the bidder has the experience and qualifications necessary to perform the work described in this IFB. The information must include such things as:
 - a. Summaries, examples, or lists of past (and current, if any) projects where bidder has performed work similar to the project described in this IFB for schools in Utah;
 - b. Information regarding qualifications and experience of bidder’s personnel.
2. ***Pricing.*** Provide documentation clearly indicating the total anticipated guaranteed maximum price to be charged by the bidder to complete this project with line items for each component of the total price.

C. **Selection.** The responsible bidder who submits the lowest responsive bid that meets the bidder expectations/objective criteria described in this IFB will be selected by the School to complete this project.

D. **Submission of Protected Information.** Protection of disclosure of information submitted by a bidder in response to this IFB is governed by Utah’s Government Records Access and management

Act in Utah Code § 63G-2-101 *et seq.* and Utah Administrative Code Rules R33-7-105 and R33-7-106. A bidder that desires to request protected status of any information it submits to the School in response to this IFB must specifically identify the information that it desires to protect and the reasons that the information should be afforded protected status under the law. In making this request, the bidder shall comply with the requirements in Utah Code § 63G-2-305, Utah Code § 63G-2-309, and Utah Administrative Code Rule R33-7-105. In turn, the School will comply with Utah Code § 63G-2-309 and Utah Administrative Code Rule R33-7-106 with respect to disclosing such information. Submission of protected information in response to this IFB shall be deemed an acknowledgment and consent by the bidder that the bidder agrees with this paragraph and will indemnify, defend, and hold harmless the School, its members, directors, officers, staff, and agents from any and all liability relating to the proper disclosure of information provided by the bidder in response to this IFB, even if the bidder requested protected or other confidential status for the information.

- E. Submission of Bids with Protected Business Confidential Information. In accordance with Utah Administrative Code Rule R33-7-107, if a bidder submits a bid that contains information claimed to be business confidential or protected information, the bidder must submit two separate bids:
1. One redacted version for public release, with all protected business confidential information either blacked-out or removed, and marked as “Redacted Version;” and
 2. One non-redacted version for evaluation purposes clearly marked as “Protected Business Confidential.”

Note: Bid pricing may not be classified as business confidential and will be considered public information. In addition, an entire bid may not be designated as “protected,” “confidential,” or “proprietary” and shall be considered non-responsive unless the bidder removes the designation.

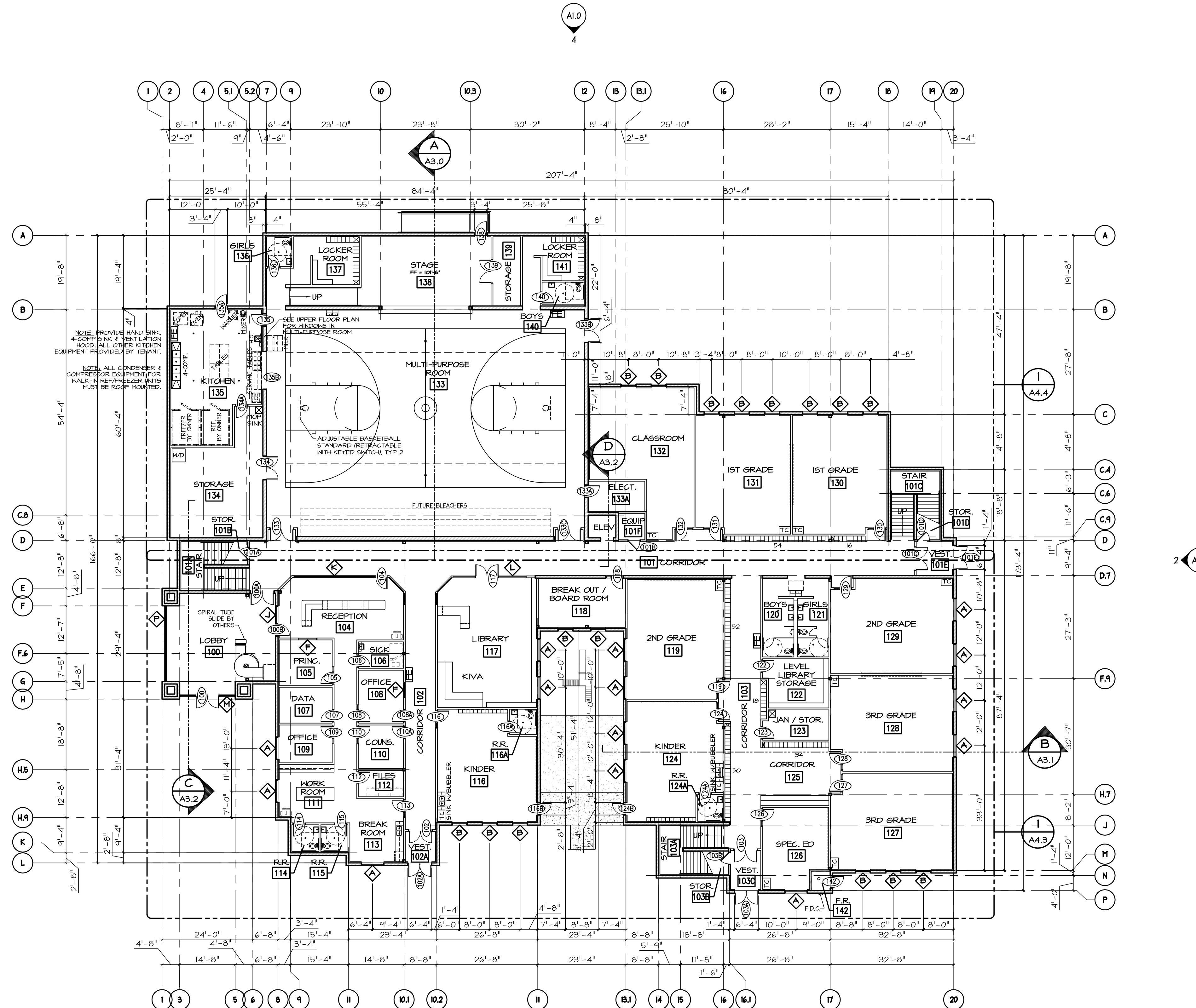
In addition, per Utah Administrative Code Rule R33-6-112, the School is required to make available to each bidder and to the public a notice that includes (a) the name of the bidder to which the contract is awarded and the bidder’s bid pricing; and (b) the names and the prices of each bidder to which the contract is not awarded.

EXHIBIT A

THROUGH-PENETRATION FIRESTOP SYSTEMS:

- A FIRE RESISTIVE WALL OR FLOOR MUST BE SEALED BACK TO ITS ORIGINAL FIRE INTEGRITY WHEN PENETRATED. CONTRACTOR TO USE THE UL DESIGN NUMBERS BELOW TO MAINTAIN FIRE RESISTIVE INTEGRITY.
- STUD WALLS: W-L-1002
- CMU WALLS: W-J-1009
- CONCRETE FLOOR ASSEMBLY: F-A-1008

- FIRE RESISTIVE ROOMS:
- FIRE RISER ROOM
- ELEVATOR SHAFT
- ELEVATOR EQUIPMENT ROOM
- STORAGE UNDER STAIRS



NOTE, PROVIDE BLOCKING FOR FUTURE WHITE BOARDS. WHITE BOARD SYMBOL: [Symbol]

FIRE EXTINGUISHER NOTE:

- [Symbol] UPON COMPLETION OF THIS PROJECT, PROVIDE FIRE EXTINGUISHERS WITH A MIN. RATING OF 2A10BC. FIRE EXTINGUISHERS SHALL BE PLACED TO ENABLE A TRAVEL DISTANCE NOT MORE THAN 75' TO ACCESS FROM ANY POINT OF THE FACILITY.

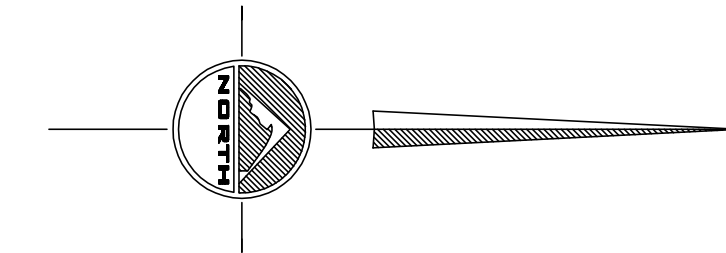
WALL TYPES LEGEND

WALL	DESCRIPTION
1 HR WALL SHOWN SHADED	MTL STUDS @ 16" O.C. WITH 5/8" TYPE 'X' G.W.B. TO STEEL DECK (UL DES U419)
INTERIOR FUR OUT WALLS	3 5/8" 20 GA MTL STUDS @ 16" O.C. WITH 5/8" GNB. ON FINISH SIDE U.N.O.
INTERIOR PARTITION WALLS	6" 20 GA MTL STUDS @ 16" O.C. WITH 5/8" GNB. BOTH SIDES.
BACK-TO-BACK REST ROOM PLUMBING WALL	(2) ROWS 6" 20 GA MTL STUDS @ 16" O.C. WITH 5/8" WATER-RESISTANT GNB.
REST ROOM PLUMBING WALL	6" 20 GA MTL STUDS @ 16" O.C. WITH 5/8" WATER-RESISTANT GNB.
EXTERIOR WALLS	8" CMU WALLS
EXTERIOR WALLS	12" CMU WALLS

CUBBIES & LOCKER NOTE:
 -ADA ACCESSIBLE CUBBIES AND COAT HOOKS SHALL BE LOCATED IN THE KINDERGARTEN CLASSROOMS (SEE SHEET A7.0)
 -A MINIMUM OF 5% OF LOCKERS PROVIDED IN AN ACCESSIBLE SPACE SHALL BE ACCESSIBLE PER 2012 IBC 1109.9)

CHILDREN'S REACH RANGES
 SEE 2010 ADA TABLE 308.1

FORWARD OR SIDE REACH	AGES 3-4	AGES 5-8	AGES 9-12
HIGH (MAXIMUM)	36 INCHES	40 INCHES	44 INCHES
LOW (MINIMUM)	20 INCHES	18 INCHES	16 INCHES



MAIN FLOOR PLAN
 SCALE: 1/16" = 1'-0"

MAIN: 26,921 SQ.FT.
 UPPER: 16,162 SQ.FT.
 TOTAL: 43,083 SQ.FT.

SEE ENLARGED PLANS FOR INTERIOR DIMENSIONS AND DETAIL VIEWS

SEAL:

DATE: 11-20-2015
 PROJECT: [Blank]
 DRAWN BY: JDJ
 CHECKED BY: C.D.

DRAWING DESCRIPTION:
 MAIN FLOOR PLAN

177 E. ANTELOPE DR. #B
 LAYTON, UT 84041
 PHONE: (801) 499-5054
 FAX: (801) 499-5065

SILVERPEAK
 ENGINEERING

WALLACE STEGNER ACADEMY
 980 SOUTH BENDING RIVER RD
 SALT LAKE CITY, UTAH

SHEET NUMBER:
A2.0
 MAIN FLOOR PLAN

PRIOR TO STARTING CONSTRUCTION, THE CONTRACTOR SHALL BE RESPONSIBLE FOR MAKING SURE THAT ALL REQUIRED PERMITS AND APPROVALS HAVE BEEN OBTAINED. NO CONSTRUCTION OR FABRICATION SHALL BEGIN UNTIL THE CONTRACTOR HAS RECEIVED AND THOROUGHLY REVIEWED ALL PLANS AND OTHER DOCUMENTS APPROVED BY ALL OF THE PERMITTING AUTHORITIES.

THROUGH-PENETRATION FIRESTOP SYSTEMS:

- A FIRE RESISTIVE WALL OR FLOOR MUST BE SEALED BACK TO ITS ORIGINAL FIRE INTEGRITY WHEN PENETRATED. CONTRACTOR TO USE THE UL DESIGN NUMBERS BELOW TO MAINTAIN FIRE RESISTIVE INTEGRITY.
- STUD WALLS: W-L-1002
- CMU WALLS: W-J-1009
- CONCRETE FLOOR ASSEMBLY: F-A-1008

-FIRE RESISTIVE ROOMS:

- FIRE RISER ROOM
- ELEVATOR SHAFT
- ELEVATOR EQUIPMENT ROOM
- STORAGE UNDER STAIRS

SEAL:

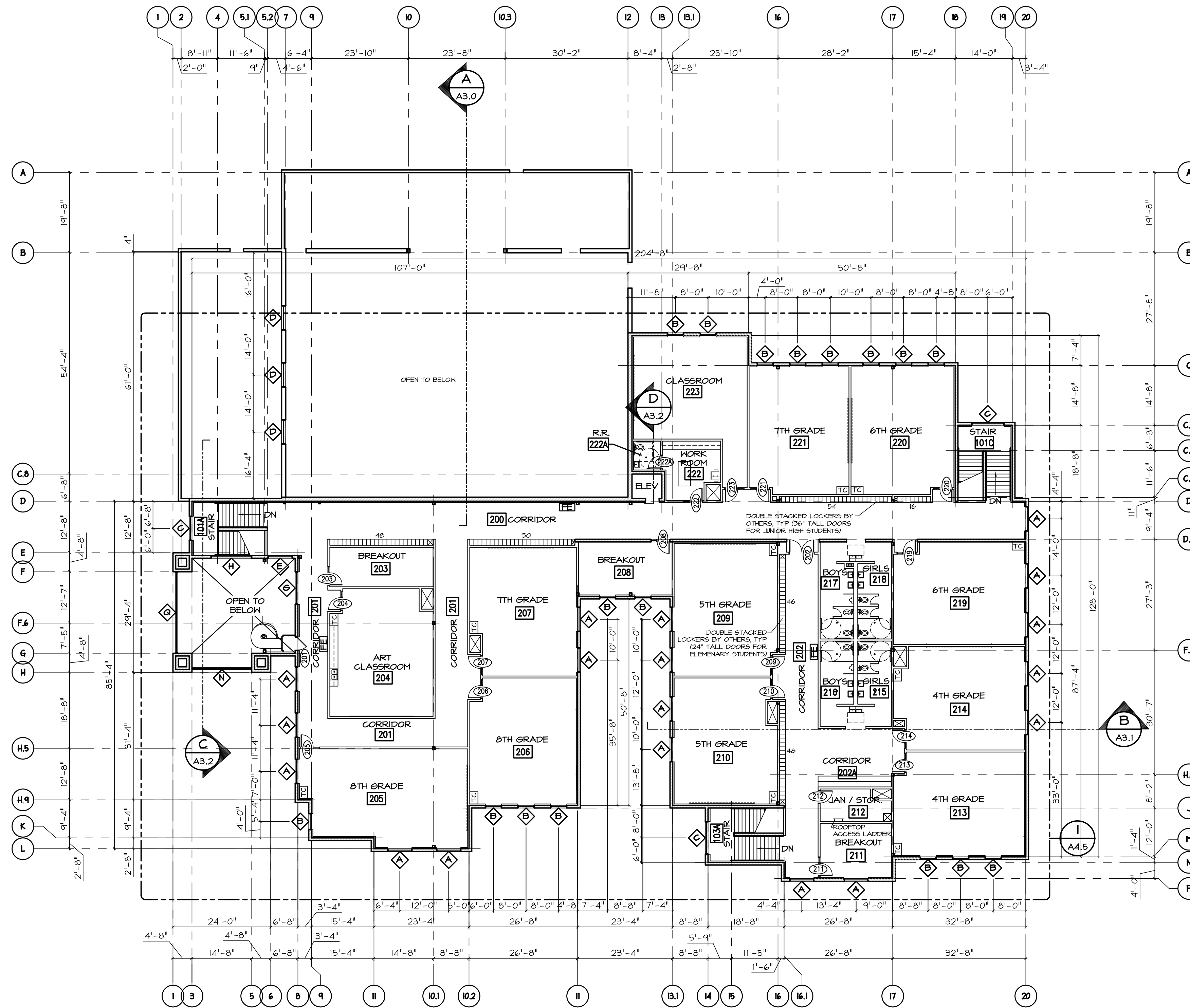
DATE: 11-20-2015
 PROJECT: J.D.J.
 DRAWN BY: J.D.J.
 CHECKED BY: C.D.

DRAWING DESCRIPTION:
 UPPER FLOOR PLAN

177 E. ANTELOPE DR. #B
 LAYTON, UT 84041
 PHONE: (801) 499-5054
 FAX: (801) 499-5065

SILVERPEAK
 ENGINEERING

WALLACE STEGNER ACADEMY
 980 SOUTH BENDING RIVER RD
 SALT LAKE CITY, UTAH



NOTE, PROVIDE BLOCKING FOR FUTURE WHITE BOARDS. WHITE BOARD SYMBOL:

FIRE EXTINGUISHER NOTE:

- UPON COMPLETION OF THIS PROJECT, PROVIDE FIRE EXTINGUISHERS WITH A MIN. RATING OF 2A10BC. FIRE EXTINGUISHERS SHALL BE PLACED TO ENABLE A TRAVEL DISTANCE NOT MORE THAN 75' TO ACCESS FROM ANY POINT OF THE FACILITY.

WALL TYPES LEGEND

WALL	DESCRIPTION
1 HR WALL SHOWN SHADED	MTL STUDS @ 16" O.C. WITH 5/8" TYPE 'X' G.W.B. TO STEEL DECK (UL DES U419)
INTERIOR FUR OUT WALLS	3 5/8" 20 GA MTL STUDS @ 16" O.C. WITH 5/8" G.W.B. ON FINISH SIDE U.N.O.
INTERIOR PARTITION WALLS	6" 20 GA MTL STUDS @ 16" O.C. WITH 5/8" G.W.B. BOTH SIDES.
BACK-TO-BACK REST ROOM PLUMBING WALL	(2) ROWS 6" 20 GA MTL STUDS @ 16" O.C. WITH 5/8" WATER-RESISTANT G.W.B.
REST ROOM PLUMBING WALL	6" 20 GA MTL STUDS @ 16" O.C. WITH 5/8" WATER-RESISTANT G.W.B.
EXTERIOR WALLS	8" CMU WALLS
EXTERIOR WALLS	12" CMU WALLS

CUBBIES & LOCKER NOTE:
 -ADA ACCESSIBLE CUBBIES AND COAT HOOKS SHALL BE LOCATED IN THE K-3 CLASSROOMS (SEE SHEET A7.0)
 -A MINIMUM OF 5% OF LOCKERS PROVIDED IN AN ACCESSIBLE SPACE SHALL BE ACCESSIBLE PER 2012 11C 1109.9)

CHILDREN'S REACH RANGES
 SEE 2010 ADA TABLE 308.1

FORWARD OR SIDE REACH	AGES 3-4	AGES 5-8	AGES 9-12
HIGH (MAXIMUM)	36 INCHES	40 INCHES	44 INCHES
LOW (MINIMUM)	20 INCHES	18 INCHES	16 INCHES

UPPER FLOOR PLAN

SCALE: 1/16" = 1'-0"

LOCKER COUNT:
 LOCKERS WITH 24" DOOR (ELEMENTARY): 318
 LOCKERS WITH 36" DOORS (JUNIOR HIGH): 168

SEE ENLARGED PLANS FOR INTERIOR DIMENSIONS AND DETAIL VIEWS

SHEET NUMBER:
A2.1
 UPPER FLOOR PLAN

SEAL:

REVISIONS:
DATE: 11-20-2015
PROJECT: JDI
DRAWN BY: JDI
CHECKED BY: C.D.

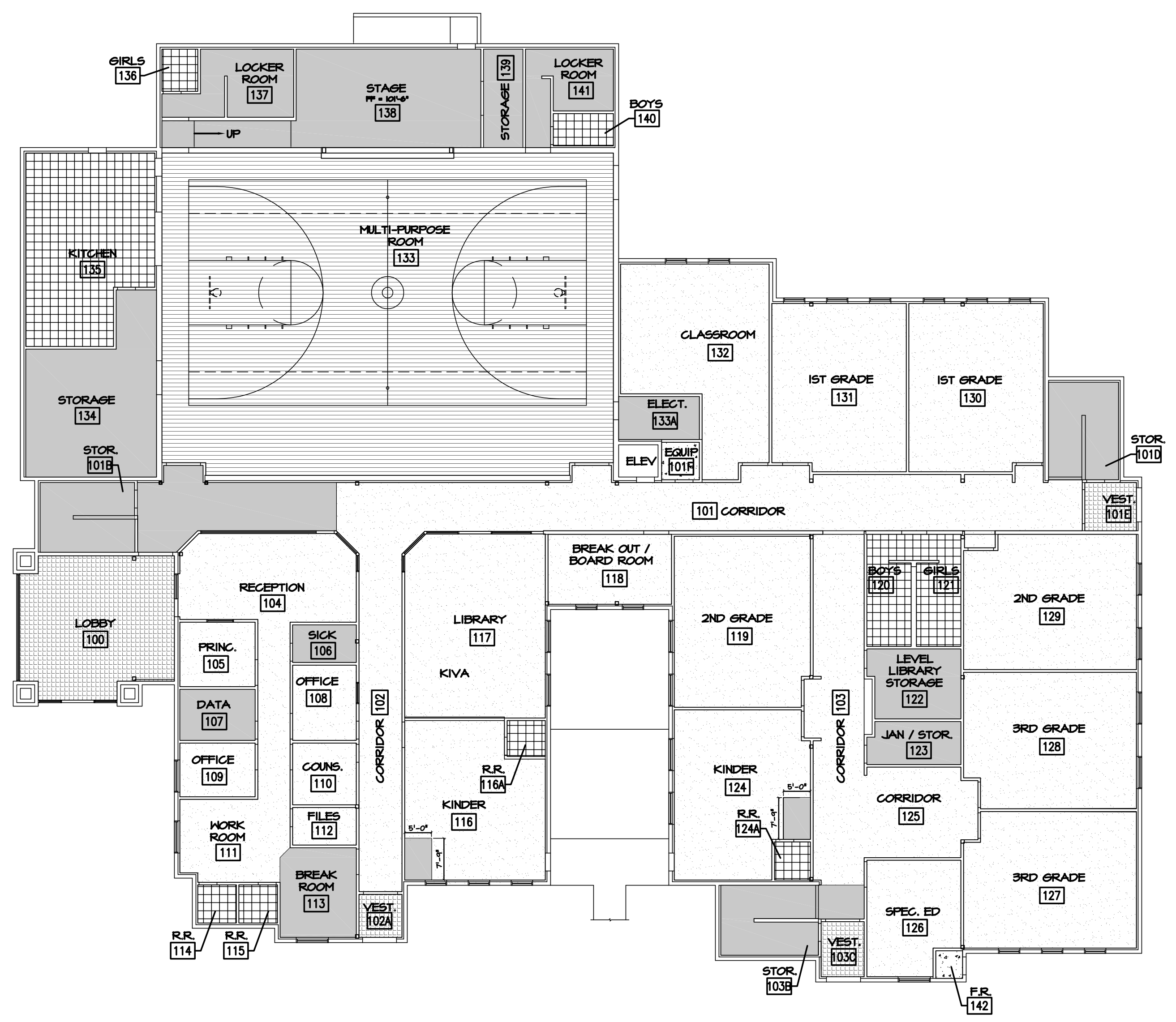
DRAWING DESCRIPTION:
FLOOR FINISH PLAN

177 E. ANTELOPE DR. #B
LAYTON, UT 84041
PHONE: (801) 499-5054
FAX: (801) 499-5065

SIL VERPEAK
ENGINEERING

WALLACE STEGNER ACADEMY
980 SOUTH BENDING RIVER RD
SALT LAKE CITY, UTAH

SHEET NUMBER:
A5.1
FLOOR FINISH PLAN



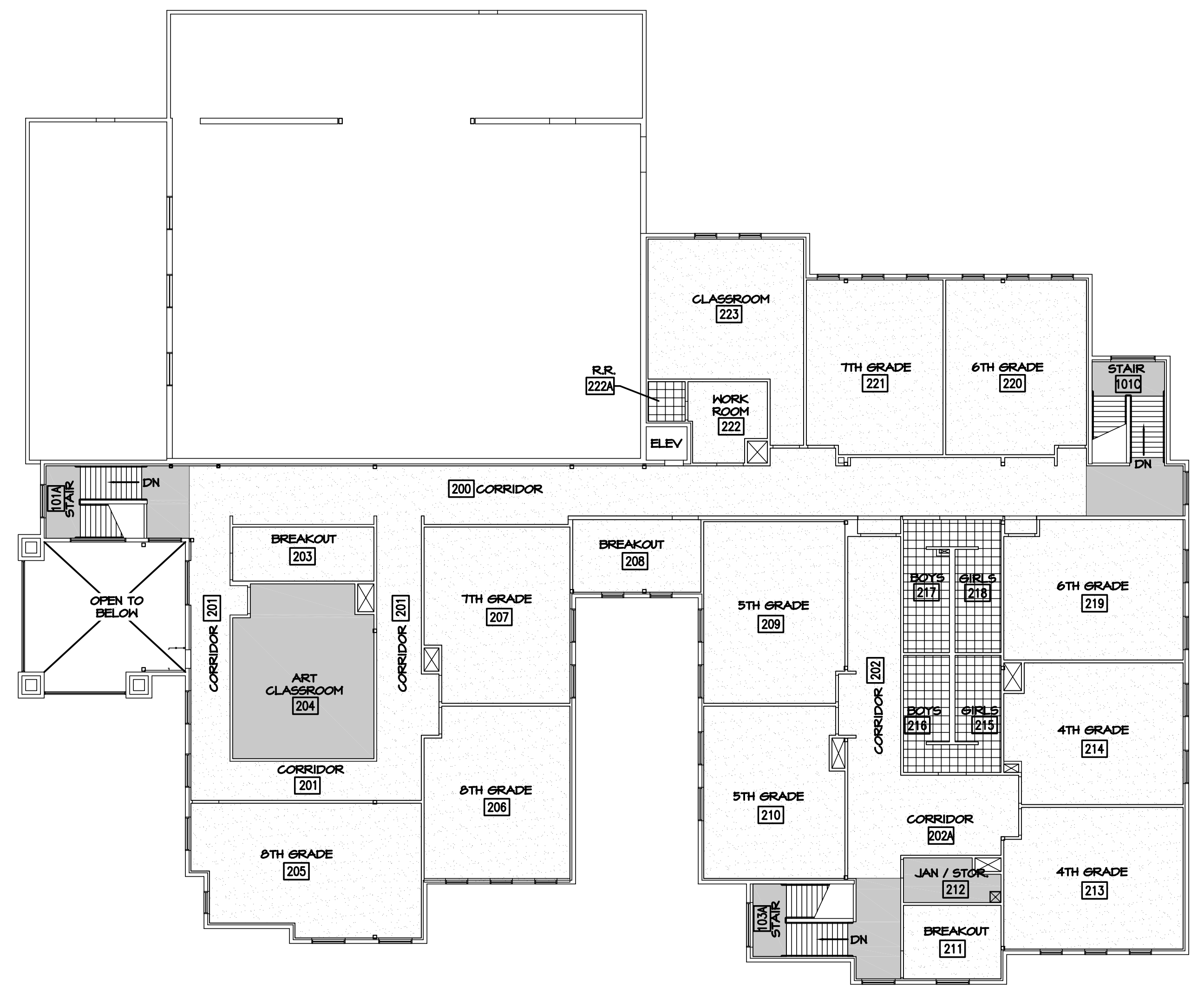
MAIN FLOOR FINISH PLAN
SCALE: 1/16" = 1'-0"

NOTE: ALL THRESHOLDS TO BE A
MAXIMUM OF 3/2"
SEE DETAILS 1 & 2 ON SHEET A6.2

FLOOR FINISH TABULATION

HATCH	FLOOR FINISH	MAIN LEVEL (SQ.FT.)	UPPER LEVEL (SQ.FT.)	TOTAL AREA
[Hatch]	VCT	4152	1542	5694
[Hatch]	VCP	4977	0	4977
[Hatch]	TILE	1439	789	2228
[Hatch]	CARPET	13173	13315	26488
[Hatch]	SEALED CONCRETE	75	0	75
[Hatch]	WALK-OFF MAT	945	0	945

NOTE: NUMBERS ARE APPROXIMATE, SUPPLIER TO FIELD VERIFY



UPPER FLOOR FINISH PLAN (2)
SCALE: 1/16" = 1'-0" (A5.1)

THROUGH-PENETRATION FIRESTOP SYSTEMS:

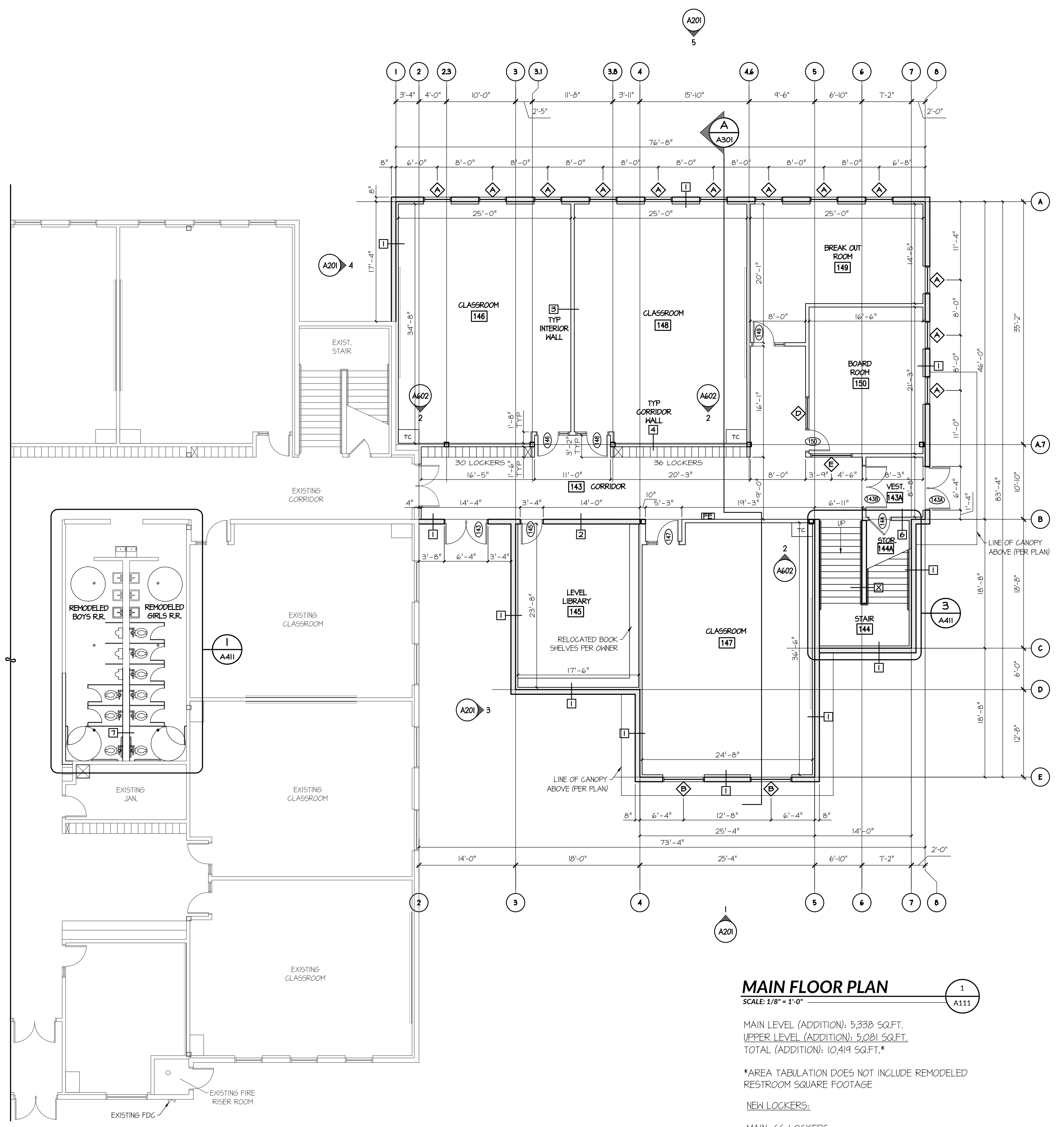
- A FIRE RESISTIVE WALL OR FLOOR MUST BE SEALED BACK TO ITS ORIGINAL FIRE INTEGRITY WHEN PENETRATED. CONTRACTOR TO USE THE UL DESIGN NUMBERS BELOW TO MAINTAIN FIRE RESISTIVE INTEGRITY.
- STUD WALLS: K-L-1002
- CMU WALLS: K-J-1009
- CONCRETE FLOOR ASSEMBLY: F-A-1008

- FIRE RESISTIVE ROOMS:
- STORAGE UNDER STAIRS

ANNOTATION LEGEND	
SYMBOL	DESCRIPTION
XXX	ROOM NUMBER
⬠	DOOR TAG (SEE DOOR SCHEDULE) SHEET A601
⬠	WINDOW TAG (SEE WINDOW SCHEDULE) SHEET A602
⬠	WALL TAG (SEE WALL SECTIONS) SHEET A801
XX.X	ELEVATION CALLOUT
X XX.X	SECTION CALLOUT
○	GRID BUBBLE
FE	FIRE EXTINGUISHER
TC	TEACHER'S CABINET (SEE CABINET ELEVATIONS)
—	WHITE BOARD (PROVIDE BLOCKING PER MANUFACTURER'S INSTRUCTIONS)

CHILDREN'S REACH RANGES			
SEE 2010 ADA TABLE 308.1			
FORWARD OR SIDE REACH	AGES 3-4	AGES 5-8	AGES 9-12
HIGH (MAXIMUM)	36 INCHES	40 INCHES	44 INCHES
LOW (MINIMUM)	20 INCHES	18 INCHES	16 INCHES

CLUBBIES & LOCKER NOTE:
 -A MINIMUM OF 5% OF LOCKERS PROVIDED IN AN ACCESSIBLE SPACE SHALL BE ACCESSIBLE PER 2015 IBC 1109.9)



FIRE EXTINGUISHER NOTE:
 UPON COMPLETION OF THIS PROJECT, PROVIDE FIRE EXTINGUISHERS WITH A MIN. RATING OF 2A10BC. FIRE EXTINGUISHERS SHALL BE PLACED TO ENABLE A TRAVEL DISTANCE NOT MORE THAN 75' TO ACCESS FROM ANY POINT OF THE FACILITY.

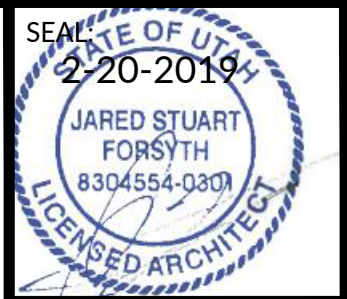
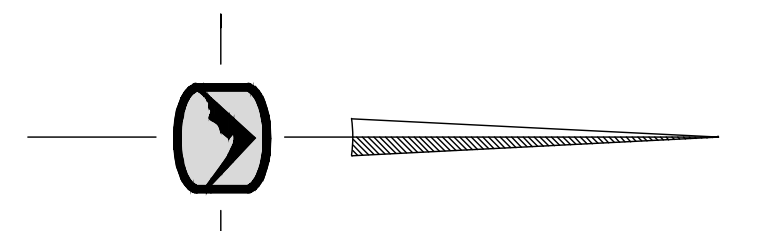
WALL TYPES LEGEND	
WALL	DESCRIPTION
1 HR WALL SHOWN SHADED	MTL STUDS @ 16" O.C., WITH 5/8" TYPE 'X' G.W.B. TO STEEL DECK (UL DES U414)
INTERIOR FUR OUT WALLS	3 5/8" 20 GA MTL STUDS @ 16" O.C., WITH 5/8" G.W.B. ON FINISH SIDE U.N.O.
INTERIOR PARTITION WALLS	6" 20 GA MTL STUDS @ 16" O.C., WITH 5/8" G.W.B. BOTH SIDES.
BACK-TO-BACK REST ROOM PLUMBING WALL	(2) ROWS 6" 20 GA MTL STUDS @ 16" O.C., WITH 5/8" WATER-RESISTANT G.W.B.
REST ROOM PLUMBING WALL	6" 20 GA MTL STUDS @ 16" O.C., WITH 5/8" WATER-RESISTANT G.W.B.
EXTERIOR WALLS	8" CMU WALLS
EXISTING WALLS	EXISTING WALLS

MAIN FLOOR PLAN
 SCALE: 1/8" = 1'-0"

MAIN LEVEL (ADDITION): 5,338 SQ.FT.
 UPPER LEVEL (ADDITION): 5,081 SQ.FT.
 TOTAL (ADDITION): 10,419 SQ.FT.*

*AREA TABULATION DOES NOT INCLUDE REMODELED RESTROOM SQUARE FOOTAGE

NEW LOCKERS:
 MAIN: 66 LOCKERS
 UPPER: 138 LOCKERS
 TOTAL: 204 LOCKERS



177 E. ANTELOPE DR. STE. B
 LAYTON, UT 84041
 PHONE: (801) 499-5054



WALLACE STEGNER ACADEMY ADDITION
 980 SOUTH BENDING RIVER RD.
 SALT LAKE CITY, UTAH

DATE: 02/20/2019
 PROJECT: AW-043.03
 DRAWN BY: JMS
 REVISIONS:

MAIN FLOOR PLAN

SHEET NUMBER:

A111

THROUGH-PENETRATION FIRESTOP SYSTEMS:

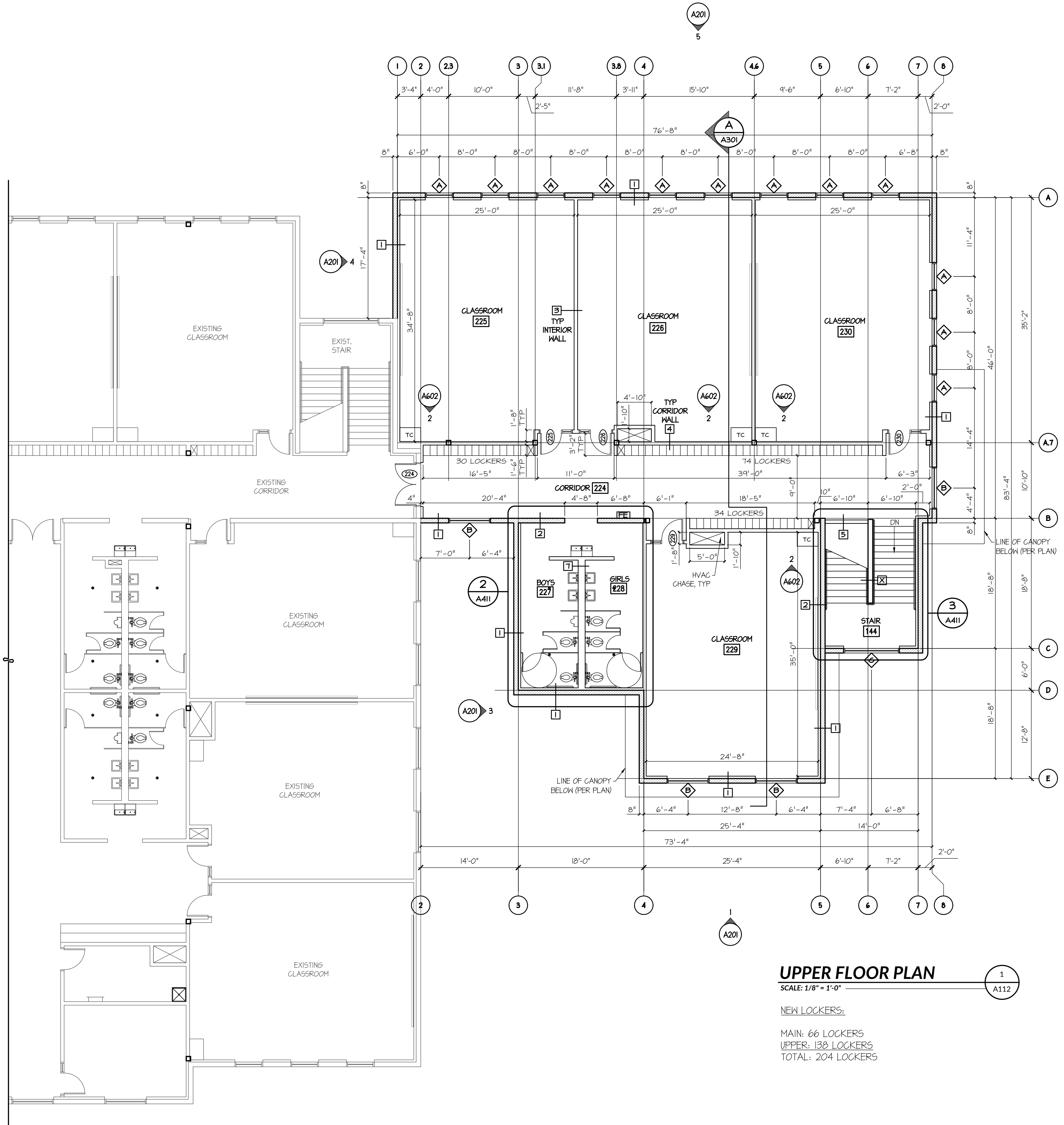
-A FIRE RESISTIVE WALL OR FLOOR MUST BE SEALED BACK TO ITS ORIGINAL FIRE INTEGRITY WHEN PENETRATED. CONTRACTOR TO USE THE UL DESIGN NUMBERS BELOW TO MAINTAIN FIRE RESISTIVE INTEGRITY.
 -STUD WALLS: K-L-1002
 -CMU WALLS: K-J-1009
 -CONCRETE FLOOR ASSEMBLY: F-A-1008

-FIRE RESISTIVE ROOMS:
 -STORAGE UNDER STAIRS

ANNOTATION LEGEND	
SYMBOL	DESCRIPTION
XXX	ROOM NUMBER
XXX	DOOR TAG (SEE DOOR SCHEDULE) SHEET A601
◇	WINDOW TAG (SEE WINDOW SCHEDULE) SHEET A602
X	WALL TAG (SEE WALL SECTIONS) SHEET A801
XXX X	ELEVATION CALLOUT
X XX.X	SECTION CALLOUT
X	GRID BUBBLE
FE	FIRE EXTINGUISHER
TC	TEACHER'S CABINET (SEE CABINET ELEVATIONS)
	WHITE BOARD (PROVIDE BLOCKING PER MANUFACTURER'S INSTRUCTIONS)

CHILDREN'S REACH RANGES			
SEE 2010 ADA TABLE 308.1			
FORWARD OR SIDE REACH	AGES 3-4	AGES 5-8	AGES 9-12
HIGH (MAXIMUM)	36 INCHES	40 INCHES	44 INCHES
LOW (MINIMUM)	20 INCHES	18 INCHES	16 INCHES

CUBBIES & LOCKER NOTE:
 -A MINIMUM OF 5% OF LOCKERS PROVIDED IN AN ACCESSIBLE SPACE SHALL BE ACCESSIBLE PER 2015 IBC 1109.9.

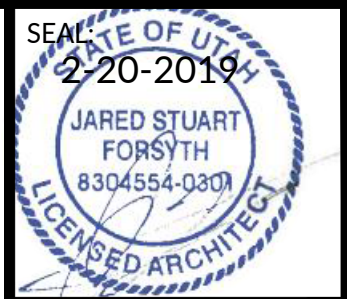


UPPER FLOOR PLAN
 SCALE: 1/8" = 1'-0"

NEW LOCKERS:
 MAIN: 66 LOCKERS
 UPPER: 138 LOCKERS
 TOTAL: 204 LOCKERS

FIRE EXTINGUISHER NOTE:
 UPON COMPLETION OF THIS PROJECT, PROVIDE FIRE EXTINGUISHERS WITH A MIN. RATING OF 2A10BC. FIRE EXTINGUISHERS SHALL BE PLACED TO ENABLE A TRAVEL DISTANCE NOT MORE THAN 75' TO ACCESS FROM ANY POINT OF THE FACILITY.

WALL TYPES LEGEND	
WALL	DESCRIPTION
1 HR WALL SHOWN SHADED	MTL STUDS @ 16" O.C. WITH 5/8" TYPE 'X' G.W.B. TO STEEL DECK (UL DES U414)
INTERIOR FIN OUT WALLS	3 5/8" 20 GA MTL STUDS @ 16" O.C. WITH 5/8" G.W.B. ON FINISH SIDE U.N.O.
INTERIOR PARTITION WALLS	6" 20 GA MTL STUDS @ 16" O.C. WITH 5/8" G.W.B. BOTH SIDES.
BACK-TO-BACK REST ROOM PLUMBING WALL	(2) ROWS 6" 20 GA MTL STUDS @ 16" O.C. WITH 5/8" WATER-RESISTANT G.W.B.
REST ROOM PLUMBING WALL	6" 20 GA MTL STUDS @ 16" O.C. WITH 5/8" WATER-RESISTANT G.W.B.
EXTERIOR WALLS	8" CMU WALLS
EXISTING WALLS	EXISTING WALLS



177 E. ANTELOPE DR. STE. B
 LAYTON, UT 84041
 PHONE: (801) 499-5054

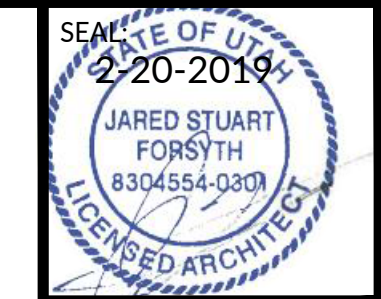


WALLACE STEGNER ACADEMY ADDITION
 980 SOUTH BENDING RIVER RD.
 SALT LAKE CITY, UTAH

DATE: 02/20/2019
 PROJECT: AW-043.03
 DRAWN BY: W/M

UPPER FLOOR PLAN

SHEET NUMBER:
A112



177 E. ANTELOPE DR. STE. B
LAYTON, UT 84041
PHONE: (801) 499-5054



WALLACE STEGNER ACADEMY ADDITION
980 SOUTH BENDING RIVER RD.
SALT LAKE CITY, UTAH

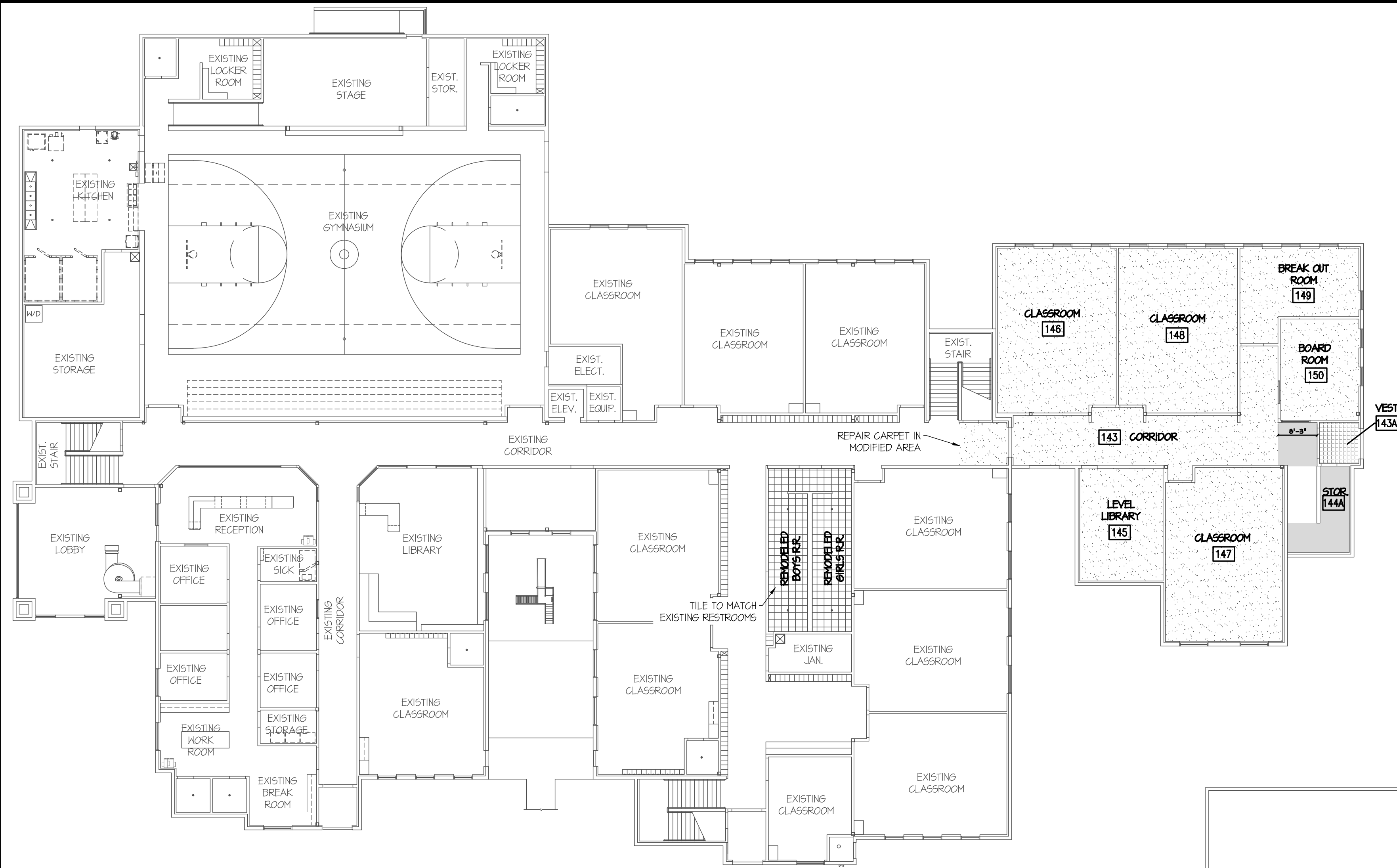
DATE: 02/20/2019
PROJECT: AW-043.03
DRAWN BY: C.D.
REVISIONS:

FLOOR FINISH PLANS
SHEET NUMBER:
A141

FLOOR FINISH TABULATION				
HATCH	FLOOR FINISH	MAIN LEVEL (SQ.FT.)	UPPER LEVEL (SQ.FT.)	TOTAL AREA
[Hatch]	VCT	230	255	485
[Hatch]	TILE	479	391	870
[Hatch]	CARPET	4599	4091	8690
[Hatch]	WALK-OFF MAT	72	0	72

NOTE: NUMBERS ARE APPROXIMATE, SUPPLIER TO FIELD VERIFY

- NOTE:
- ALL THRESHOLDS TO BE A MAXIMUM OF 1/2" SEE DETAILS 1 & 2 ON SHEET A502
 - EXISTING FLOOR FINISHES NOT SHOWN FOR CLARITY
 - FINISH SCHEDULE EON SHEET A601

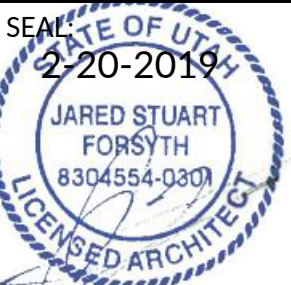


MAIN FLOOR FINISH PLAN 1
SCALE: 1/16" = 1'-0" A141

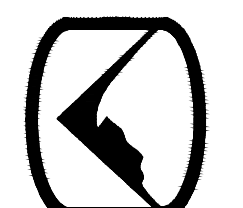


UPPER FLOOR FINISH PLAN 2
SCALE: 1/16" = 1'-0" A141

PRIOR TO STARTING CONSTRUCTION, THE CONTRACTOR SHALL BE RESPONSIBLE FOR MAKING SURE THAT ALL REQUIRED PERMITS AND APPROVALS HAVE BEEN OBTAINED. NO CONSTRUCTION OR FABRICATION SHALL BEGIN UNTIL THE CONTRACTOR HAS RECEIVED AND THOROUGHLY REVIEWED ALL PLANS AND OTHER DOCUMENTS APPROVED BY ALL OF THE PERMITTING AUTHORITIES.



177 E. ANTELOPE DR. STE. B
LAYTON, UT 84041
PHONE: (801) 499-5054



SILVERPEAK
ENGINEERING

STRUCTURAL CIVIL SURVEY WWW.SILVERPEAKENG.COM

WALLACE STEGNER ACADEMY ADDITION
980 SOUTH BENDING RIVER RD.
SALT LAKE CITY, UTAH

DATE: 02/20/2019
PROJECT: AW-043.03
DRAWN BY: C.D.

REVISIONS:

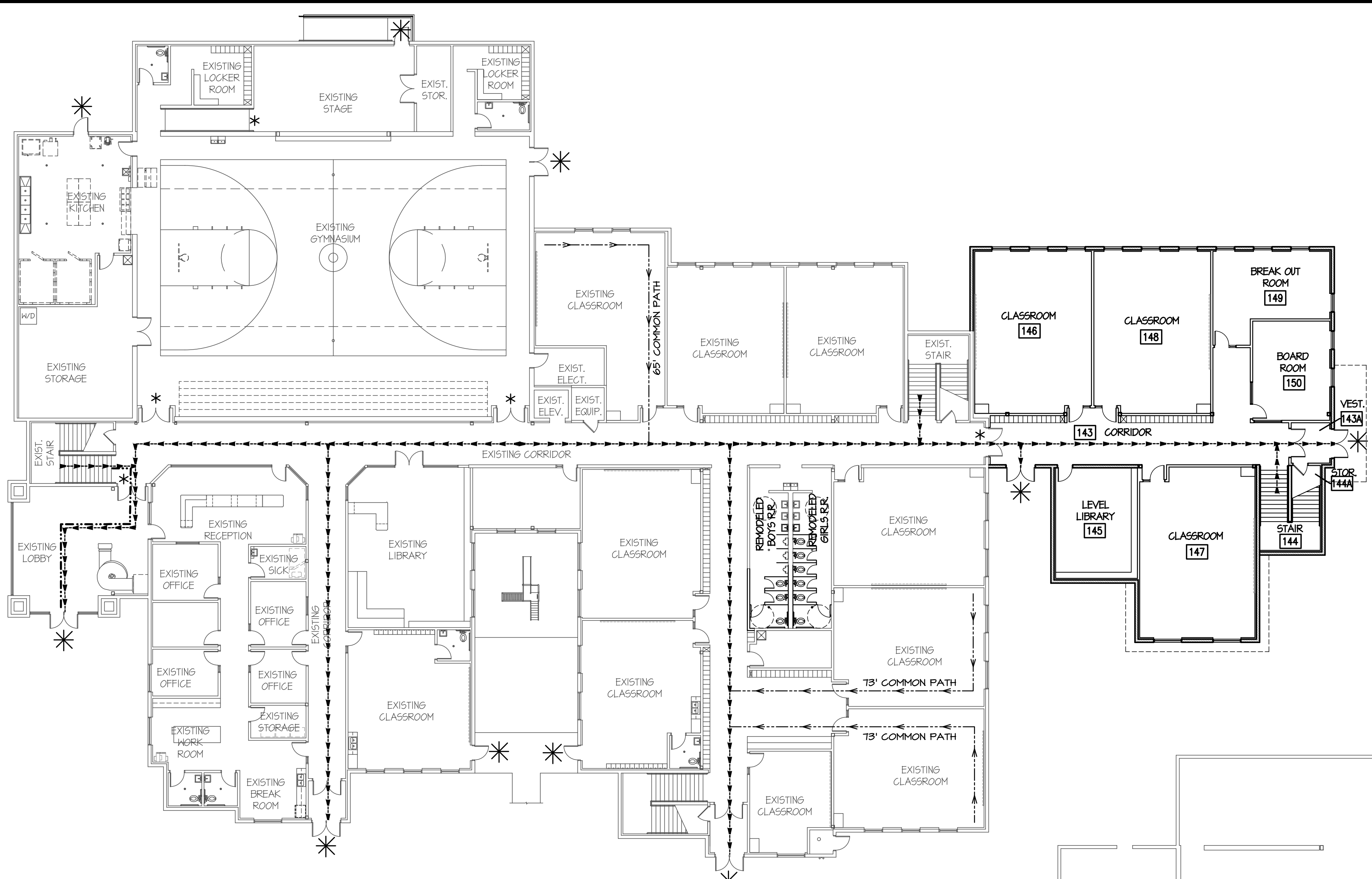
EXIT DIAGRAMS

SHEET NUMBER:

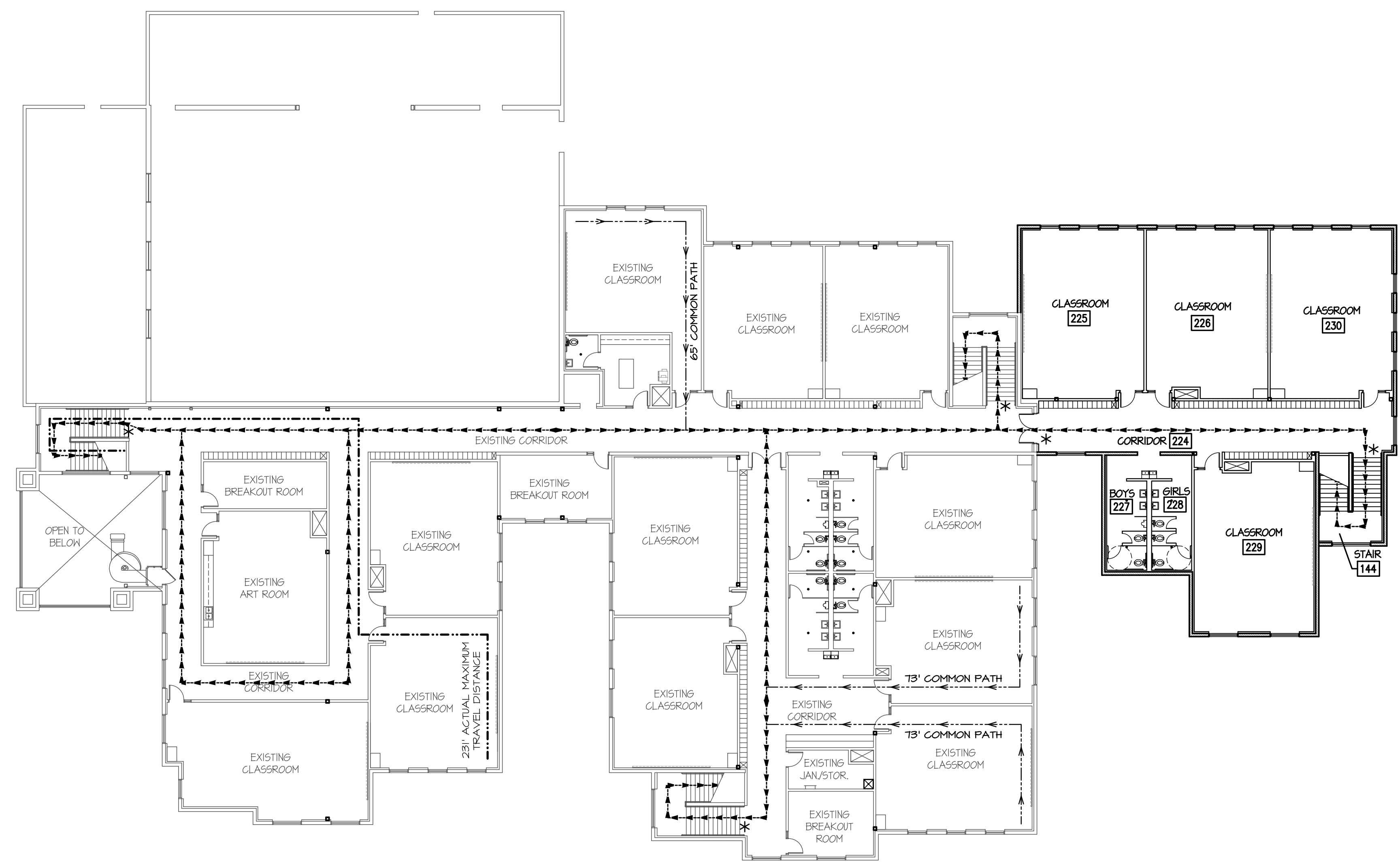
A151

LEGEND	
SYMBOL	DESCRIPTION
* (with asterisk)	EXTERIOR EXIT DOORWAY
* (with dot)	INTERIOR EXIT DOORWAY
→ (with arrow)	EXIT PATH
--- (dashed line)	ACTUAL MAXIMUM TRAVEL DISTANCE

NOTE: THE MAX. ALLOWABLE TRAVEL DISTANCE FOR THIS BUILDING IS 250' PER IBC TABLE 1017.2



MAIN EXIT DIAGRAM
SCALE: 1/16" = 1'-0"
1
A151



UPPER EXIT DIAGRAM
SCALE: 1/16" = 1'-0"
2
A151

PRIOR TO STARTING CONSTRUCTION, THE CONTRACTOR SHALL BE RESPONSIBLE FOR MAKING SURE THAT ALL REQUIRED PERMITS AND APPROVALS HAVE BEEN OBTAINED. NO CONSTRUCTION OR FABRICATION SHALL BEGIN UNTIL THE CONTRACTOR HAS RECEIVED AND THOROUGHLY REVIEWED ALL PLANS AND OTHER DOCUMENTS APPROVED BY ALL OF THE PERMITTING AUTHORITIES.