

2026 – 2027

AFTER-SCHOOL ENRICHMENT



**SCAN
HERE**
TO REGISTER

<https://bit.ly/hawthorn-south-info-f26>

Hosted at Hawthorn Academy, South Campus in partnership with Ivy Camps USA

Location: Hawthorn Academy, South Campus

Grades: K – 9th

Dates: Starts August 19, 2026

Schedule: Runs on school days throughout the academic year

Times:

- 3:15 – 5:30 PM (Monday – Thursday)
- 1:05 – 5:30 PM (Fridays: Early Release)

Monthly Pricing:

- \$280 / student per month





Drop-In Pricing:

- \$23 / student per day (M – Th)
- \$42 / student per day (Fri)

*There is a \$45 registration fee



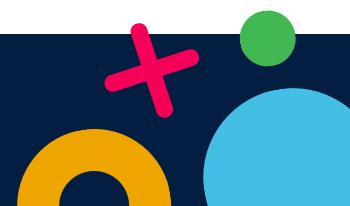
WHY PARENTS LOVE IT

-  **More than childcare**
Engaging, hands-on enrichment
-  **Student choice**
Kids explore what excites them
-  **Low-pressure environment**
Supportive and fun
-  **Built for real life**
Flexible for busy schedules



My daughter attends the after school program and loves it. It's hard to get her to leave when I pick her up! She gets to create her own games, build projects, create origami, and have fun choosing what she feels like doing within their daily programming.

— Jennine, Ivy Camps Parent



HOW IT WORKS

A simple, flexible, and enriching after-school experience



SCAN HERE

1. Register & Choose Your Schedule

Sign up through Arux and select the days that work best for your family—whether that’s a consistent weekly schedule or flexible drop-in options.



2. End-of-Day Transition

At the end of the school day, students are guided to the after-school enrichment program by an adult—either school staff or our team.

- ✓ Students are never responsible for getting to the program on their own
- ✓ Every child is checked in upon arrival through our system

You can feel confident knowing your child is accounted for every step of the way.



3. Explore & Create

Students choose from a variety of exploration areas based on their interests. From hands-on projects to collaborative challenges, each day brings something new to discover.

Curious what they can choose from?

Learn more about each exploration area on the next page →



4. Move, Recharge & Connect

After a full school day, kids have time to unwind. Your child will enjoy a balance of structured activities and more relaxed moments to socialize, recharge, and reset—with movement breaks built in. (Yes, we’ll help get some of that energy out before they head home.)



5. Flexible Pick-Up

Pick-up is available throughout the program. While you’re welcome to pick up at any point, we encourage students to stay and enjoy the full experience.

Anyone picking up your child must be listed as an authorized pick-up in Arux.



EXPLORATION AREAS

Designed to inspire creativity, build skills, and spark new interests



**SCAN
HERE**
TO REGISTER

<https://bit.ly/hawthorn-south-info-f26>

Arts & Creativity

Arts & Creativity invites students to explore, experiment, and express themselves through a wide range of hands-on artistic experiences. Across modules like **Drawing, Sketching & Painting, Sculpture & Mixed Media, and Jewelry Making**, students build foundational art skills while developing their own unique creative voice. They bring imagination to life through immersive themes such as **Theater & Costumes** and **Cardboard Box Adventures**, where storytelling, design, and performance come together. With globally inspired projects in **Art Around the World** and nature-based creations in **Nature-Inspired Art**, students expand their perspective while working with diverse materials and techniques. From crafting wearable art to designing stickers, stamps, and visual messages, we emphasize creativity, confidence, and self-expression—giving every student the opportunity to create something meaningful and uniquely their own.



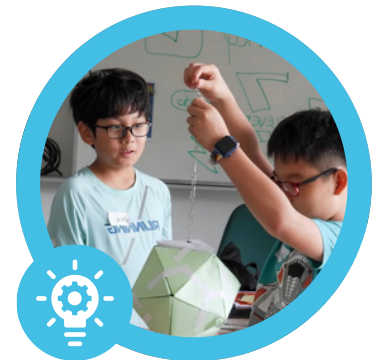
Sports & Movement

Sports & Movement keeps students active, energized, and engaged through a dynamic mix of games, skill-building, and team-based challenges. From developing coordination and control in **Coordination & Dexterity** to high-energy competition in **Ivy Camps Olympics** and **Field Day Frenzy**, students build foundational physical literacy—agility, balance, speed, and teamwork—through a wide variety of activities. They explore both structured sports like **Soccer** and **International Sports** alongside creative, inclusive formats like **Playground Games** and **Movement Exploration**, ensuring every child finds a way to participate and succeed. With a focus on fun, confidence, and collaboration, these activities help kids stay active while building movement skills, social connections, and a positive relationship with physical activity.



Engineering

Engineering empowers students to think like innovators as they design, build, and problem-solve through hands-on challenges and creative projects. From imagining and constructing in **Dream House Design** to inventing in **Toy Design** and experimenting with materials in **Duct Tape Engineering**, students explore how ideas become real-world solutions. They tackle engaging challenges like **Puzzle Mania** and **Game Design**, where logic, creativity, and user experience come together, while learning core frameworks through Design Thinking and practical skills in **Build It & Fix It**. With a focus on sustainability in **Green Engineering**, students also begin to understand how engineering can solve real-world problems. This track builds confidence in critical thinking, creativity, and iteration—encouraging students to test ideas, learn from failure, and bring their innovations to life.



CALENDAR

2026 – 2027

-  No Care
-  Camp Days
-  Single Day Care
-  Half Day Care

AUGUST

S	M	T	W	T	F	S
						1
2	3	4	5	6	7	8
9	10	11	12	13	14	15
16	17	18	19	20	21	22
23	24	25	26	27	28	29
30	31					

SEPTEMBER

S	M	T	W	T	F	S
		1	2	3	4	5
6	7	8	9	10	11	12
13	14	15	16	17	18	19
20	21	22	23	24	25	26
27	28	29	30			

OCTOBER

S	M	T	W	T	F	S
				1	2	3
4	5	6	7	8	9	10
11	12	13	14	15	16	17
18	19	20	21	22	23	24
25	26	27	28	29	30	31

NOVEMBER

S	M	T	W	T	F	S
1	2	3	4	5	6	7
8	9	10	11	12	13	14
15	16	17	18	19	20	21
22	23	24	25	26	27	28
29	30					

DECEMBER

S	M	T	W	T	F	S
		1	2	3	4	5
6	7	8	9	10	11	12
13	14	15	16	17	18	19
20	21	22	23	24	25	26
27	28	29	30	31		

JANUARY

S	M	T	W	T	F	S
					1	2
3	4	5	6	7	8	9
10	11	12	13	14	15	16
17	18	19	20	21	22	23
24	25	26	27	28	29	30
31						

FEBRUARY

S	M	T	W	T	F	S
	1	2	3	4	5	6
7	8	9	10	11	12	13
14	15	16	17	18	19	20
21	22	23	24	25	26	27
28						

MARCH

S	M	T	W	T	F	S
	1	2	3	4	5	6
7	8	9	10	11	12	13
14	15	16	17	18	19	20
21	22	23	24	25	26	27
28	29	30	31			

APRIL

S	M	T	W	T	F	S
				1	2	3
4	5	6	7	8	9	10
11	12	13	14	15	16	17
18	19	20	21	22	23	24
25	26	27	28	29	30	

MAY

S	M	T	W	T	F	S
						1
2	3	4	5	6	7	8
9	10	11	12	13	14	15
16	17	18	19	20	21	22
23	24	25	26	27	28	29
30	31					



**SCAN
HERE**
TO REGISTER

OR VISIT THE LINK BELOW

<https://bit.ly/hawthorn-south-info-f26>

