

# 2026 – 2027

## AFTER-SCHOOL ENRICHMENT



**SCAN  
HERE**  
TO REGISTER

<https://bit.ly/hawthorn-west-info-f26>

Hosted at Hawthorn Academy, West Campus in partnership with Ivy Camps USA

**Location:** Hawthorn Academy, West Campus

**Grades:** K – 9th

**Dates:** Starts August 19, 2026

**Schedule:** Runs on school days throughout the academic year

**Times:**

- 3:05 – 5:30 PM (Monday – Thursday)
- 1:00 – 5:30 PM (Fridays: Early Release)

**Monthly Pricing:**

- \$280 / student per month

**Drop-In Pricing:**

- \$23 / student per day (M – Th)
- \$42 / student per day (Fri)

\*There is a \$45 registration fee



### WHY PARENTS LOVE IT



**More than childcare**

Engaging, hands-on enrichment



**Student choice**

Kids explore what excites them



**Low-pressure environment**

Supportive and fun



**Built for real life**

Flexible for busy schedules



*My daughter attends the after school program and loves it. It's hard to get her to leave when I pick her up! She gets to create her own games, build projects, create origami, and have fun choosing what she feels like doing within their daily programming.*

— Jennine, Ivy Camps Parent



# HOW IT WORKS

*A simple, flexible, and enriching after-school experience*



SCAN HERE

## 1. Register & Choose Your Schedule

Sign up through Arux and select the days that work best for your family—whether that’s a consistent weekly schedule or flexible drop-in options.



## 2. End-of-Day Transition

At the end of the school day, students are guided to the after-school enrichment program by an adult—either school staff or our team.

- ✓ Students are never responsible for getting to the program on their own
- ✓ Every child is checked in upon arrival through our system

You can feel confident knowing your child is accounted for every step of the way.



## 3. Explore & Create

Students choose from a variety of exploration areas based on their interests. From hands-on projects to collaborative challenges, each day brings something new to discover.

*Curious what they can choose from?*

*Learn more about each exploration area on the next page* →



## 4. Move, Recharge & Connect

After a full school day, kids have time to unwind. Your child will enjoy a balance of structured activities and more relaxed moments to socialize, recharge, and reset—with movement breaks built in. (Yes, we’ll help get some of that energy out before they head home.)



## 5. Flexible Pick-Up

Pick-up is available throughout the program. While you’re welcome to pick up at any point, we encourage students to stay and enjoy the full experience.

*Anyone picking up your child must be listed as an authorized pick-up in Arux.*



# EXPLORATION AREAS

*Designed to inspire creativity, build skills, and spark new interests*



**SCAN  
HERE**  
TO REGISTER

<https://bit.ly/hawthorn-west-info-f26>

## Arts & Creativity

Arts & Creativity invites students to explore, experiment, and express themselves through a wide range of hands-on artistic experiences. Across modules like **Drawing, Sketching & Painting, Sculpture & Mixed Media, and Jewelry Making**, students build foundational art skills while developing their own unique creative voice. They bring imagination to life through immersive themes such as **Theater & Costumes** and **Cardboard Box Adventures**, where storytelling, design, and performance come together. With globally inspired projects in **Art Around the World** and nature-based creations in **Nature-Inspired Art**, students expand their perspective while working with diverse materials and techniques. From crafting wearable art to designing stickers, stamps, and visual messages, we emphasize creativity, confidence, and self-expression—giving every student the opportunity to create something meaningful and uniquely their own.



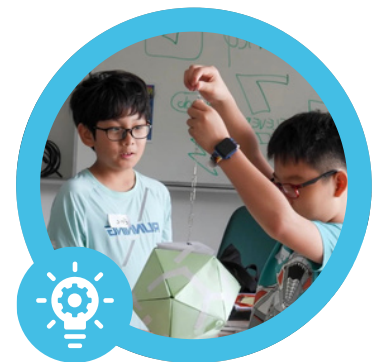
## Sports & Movement

Sports & Movement keeps students active, energized, and engaged through a dynamic mix of games, skill-building, and team-based challenges. From developing coordination and control in **Coordination & Dexterity** to high-energy competition in **Ivy Camps Olympics** and **Field Day Frenzy**, students build foundational physical literacy—agility, balance, speed, and teamwork—through a wide variety of activities. They explore both structured sports like **Soccer** and **International Sports** alongside creative, inclusive formats like **Playground Games** and **Movement Exploration**, ensuring every child finds a way to participate and succeed. With a focus on fun, confidence, and collaboration, these activities help kids stay active while building movement skills, social connections, and a positive relationship with physical activity.



## Engineering

Engineering empowers students to think like innovators as they design, build, and problem-solve through hands-on challenges and creative projects. From imagining and constructing in **Dream House Design** to inventing in **Toy Design** and experimenting with materials in **Duct Tape Engineering**, students explore how ideas become real-world solutions. They tackle engaging challenges like **Puzzle Mania** and **Game Design**, where logic, creativity, and user experience come together, while learning core frameworks through Design Thinking and practical skills in **Build It & Fix It**. With a focus on sustainability in **Green Engineering**, students also begin to understand how engineering can solve real-world problems. This track builds confidence in critical thinking, creativity, and iteration—encouraging students to test ideas, learn from failure, and bring their innovations to life.



# CALENDAR

2026 – 2027

-  No Care
-  Camp Days
-  Single Day Care
-  Half Day Care

## AUGUST

S	M	T	W	T	F	S
						1
2	3	4	5	6	7	8
9	10	11	12	13	14	15
16	17	18	19	20	21	22
23	24	25	26	27	28	29
30	31					

## SEPTEMBER

S	M	T	W	T	F	S
		1	2	3	4	5
6	7	8	9	10	11	12
13	14	15	16	17	18	19
20	21	22	23	24	25	26
27	28	29	30			

## OCTOBER

S	M	T	W	T	F	S
				1	2	3
4	5	6	7	8	9	10
11	12	13	14	15	16	17
18	19	20	21	22	23	24
25	26	27	28	29	30	31

## NOVEMBER

S	M	T	W	T	F	S
1	2	3	4	5	6	7
8	9	10	11	12	13	14
15	16	17	18	19	20	21
22	23	24	25	26	27	28
29	30					

## DECEMBER

S	M	T	W	T	F	S
		1	2	3	4	5
6	7	8	9	10	11	12
13	14	15	16	17	18	19
20	21	22	23	24	25	26
27	28	29	30	31		

## JANUARY

S	M	T	W	T	F	S
					1	2
3	4	5	6	7	8	9
10	11	12	13	14	15	16
17	18	19	20	21	22	23
24	25	26	27	28	29	30
31						

## FEBRUARY

S	M	T	W	T	F	S
	1	2	3	4	5	6
7	8	9	10	11	12	13
14	15	16	17	18	19	20
21	22	23	24	25	26	27
28						

## MARCH

S	M	T	W	T	F	S
	1	2	3	4	5	6
7	8	9	10	11	12	13
14	15	16	17	18	19	20
21	22	23	24	25	26	27
28	29	30	31			

## APRIL

S	M	T	W	T	F	S
				1	2	3
4	5	6	7	8	9	10
11	12	13	14	15	16	17
18	19	20	21	22	23	24
25	26	27	28	29	30	

## MAY

S	M	T	W	T	F	S
						1
2	3	4	5	6	7	8
9	10	11	12	13	14	15
16	17	18	19	20	21	22
23	24	25	26	27	28	29
30	31					



**SCAN  
HERE**  
TO REGISTER

**OR VISIT THE LINK BELOW**

<https://bit.ly/hawthorn-west-info-f26>

